

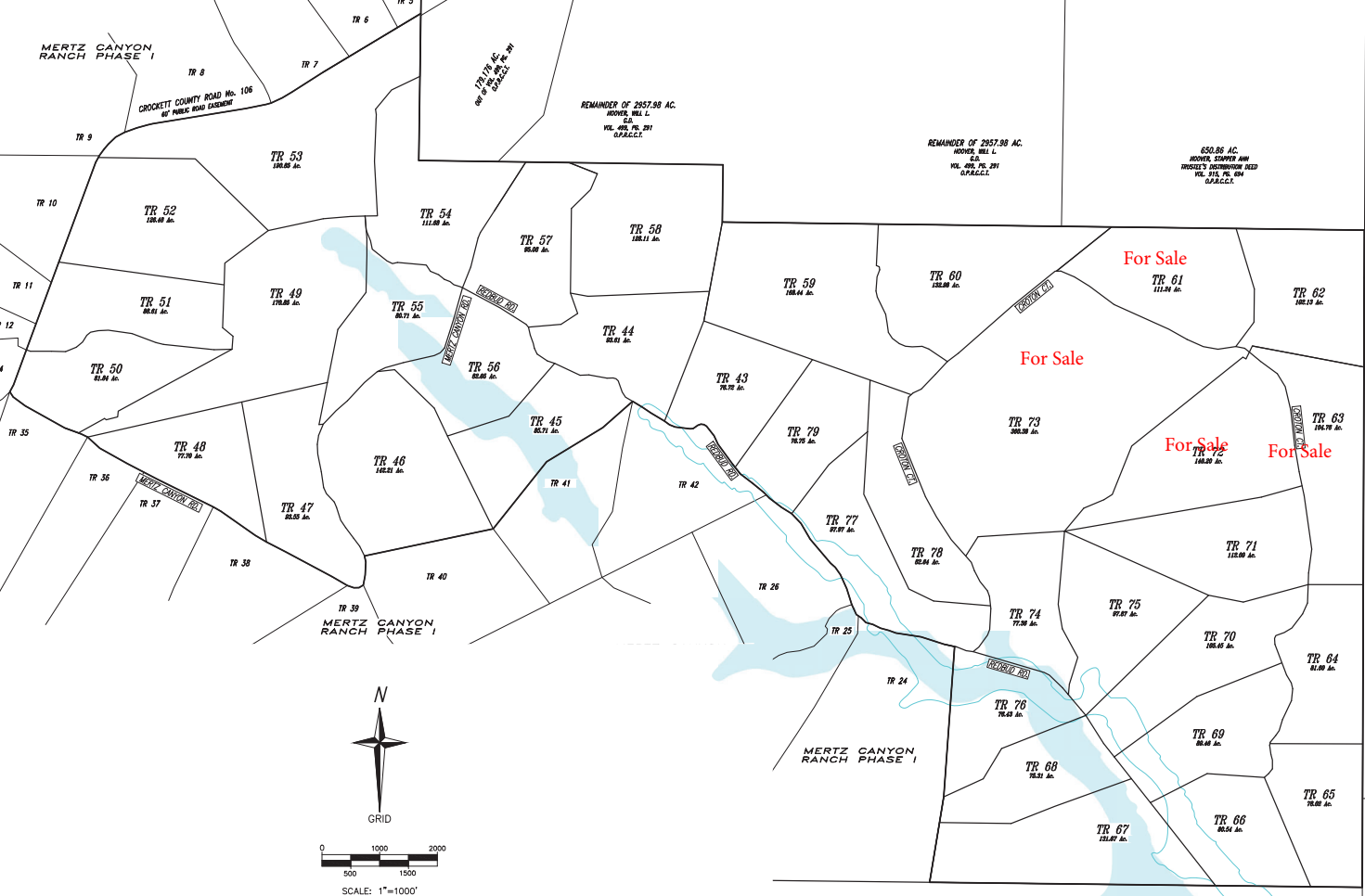
MERTZ CANYON RANCH PHASE I

CROCKETT COUNTY ROAD No. 106  
60' PUBLIC ROAD EASEMENT

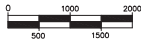
REMAINDER OF 2957.98 AC.  
HOOPER, WILA L.  
S24  
VOL. 408, PG. 291  
S.P.A.C.C.T.

REMAINDER OF 2957.98 AC.  
HOOPER, WILA L.  
S24  
VOL. 408, PG. 291  
S.P.A.C.C.T.

650.86 AC.  
HOOPER, SHARPE AND  
HUSSELL'S SUCCESSION TRUST  
VOL. 515, PG. 304  
S.P.A.C.C.T.



GRID



SCALE: 1"=1000'

For Sale

For Sale

For Sale

For Sale