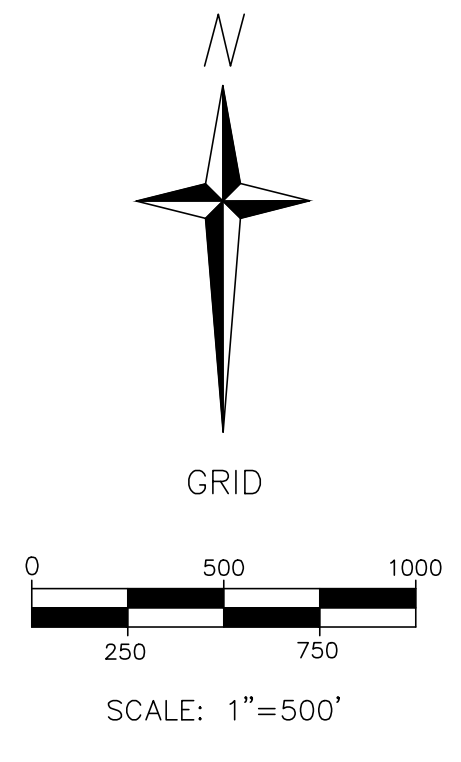
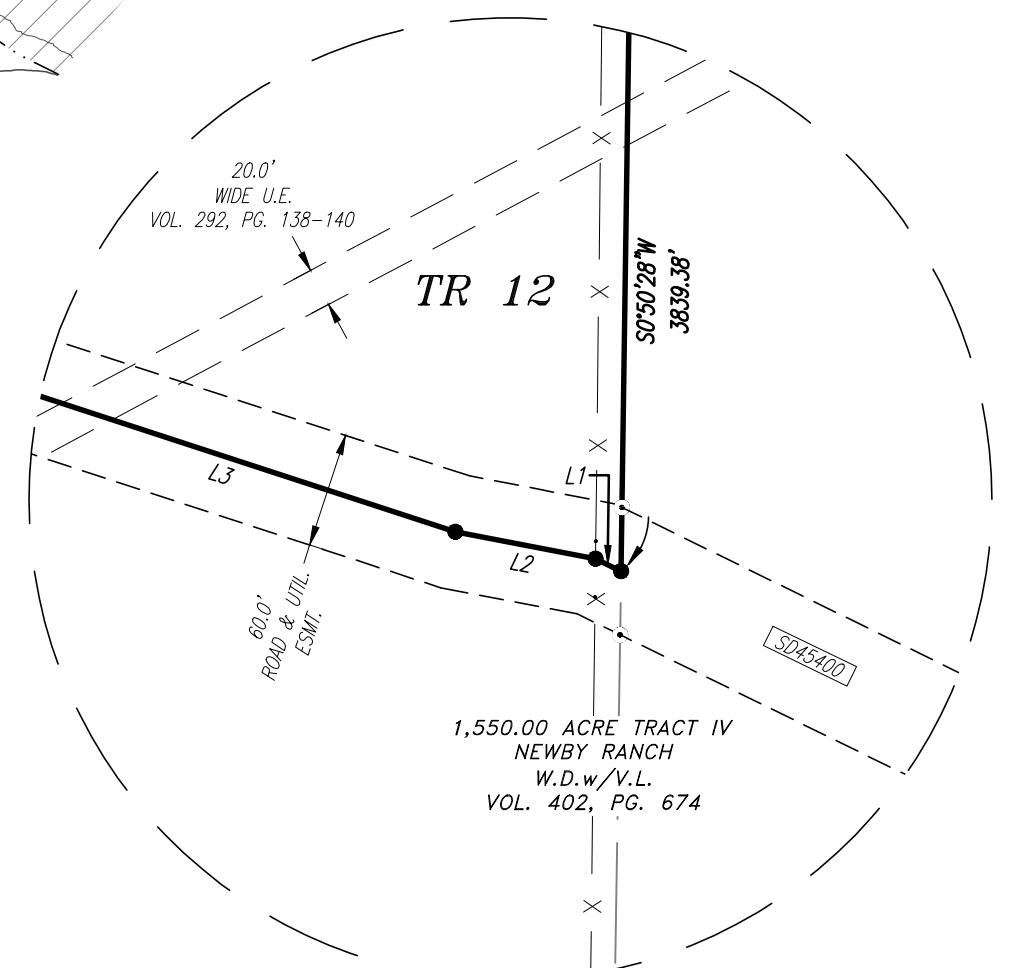
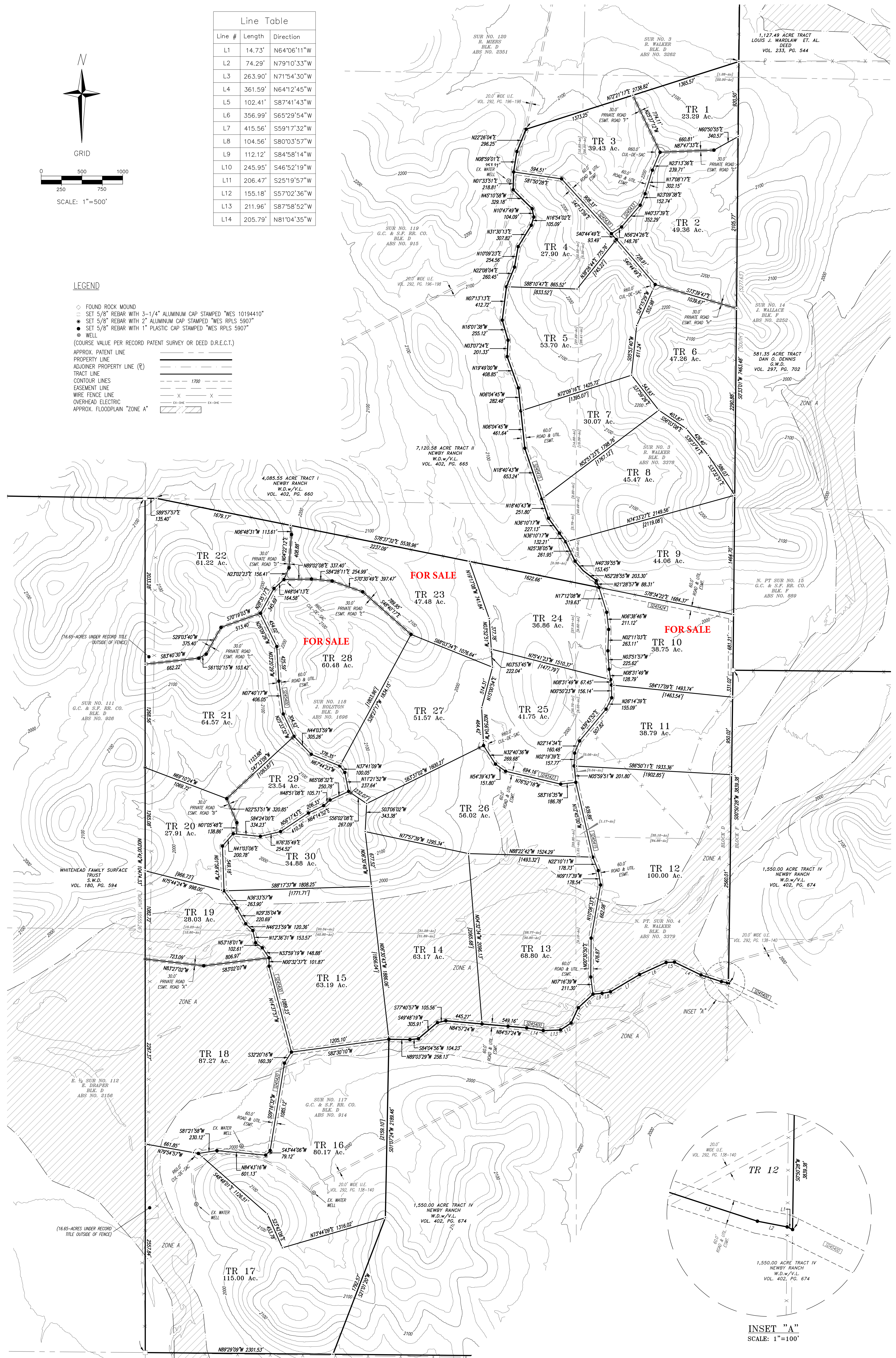


Line #	Length	Direction
L1	14.73'	N64°06'11"W
L2	74.29'	N79°10'33"W
L3	263.90'	N71°54'30"W
L4	361.59'	N64°12'45"W
L5	102.41'	S87°41'43"W
L6	356.99'	S65°29'54"W
L7	415.56'	S59°17'32"W
L8	104.56'	S80°03'57"W
L9	112.12'	S84°58'14"W
L10	245.95'	S46°52'19"W
L11	206.47'	S25°19'57"W
L12	155.18'	S57°02'36"W
L13	211.96'	S87°58'52"W
L14	205.79'	N81°04'35"W



LEGEND

- FOUND ROCK MOUND
 - SET 5/8" REBAR WITH 3-1/4" ALUMINUM CAP STAMPED "WES 10194410"
 - SET 5/8" REBAR WITH 2" ALUMINUM CAP STAMPED "WES RPLS 5907"
 - SET 5/8" REBAR WITH 1" PLASTIC CAP STAMPED "WES RPLS 5907"
 - WELL
- (COURSE VALUE PER RECORD PATENT SURVEY OR DEED D.R.E.C.T.)
- APPROX. PATENT LINE
 - PROPERTY LINE
 - ADJOINER PROPERTY LINE (P)
 - TRACT LINE
 - CONTOUR LINES
 - EASEMENT LINE
 - WIRE FENCE LINE
 - OVERHEAD ELECTRIC
 - APPROX. FLOODPLAIN "ZONE A"



INSET "A"
SCALE: 1"=100'

631 WATER STREET KERRVILLE, TX 75028 830-217-7100		wellbornengineering.com FRM# 10194410 T.B.P.E.L.S.	
PROJECT: WES-21-31	SCALE: 1"=500'	FIELD: J5/BM	DRAFTING: J5M
LAST FIELD VISIT: 05.26.2021		SHEET NO. 3 of 3	
LAST DRAFT REVISION: 05.26.2021		CHECKED: RSM	



SUR. NO. 113
G.C. & S.F. RR. CO.
BLK. D
ABS. NO. 912

SUR. NO. 118
S. VETTMAN
BLK. D
ABS. NO. 2047

WHITEHEAD FAMILY SURFACE TRUST
S.W.D.
VOL. 160, PG. 594