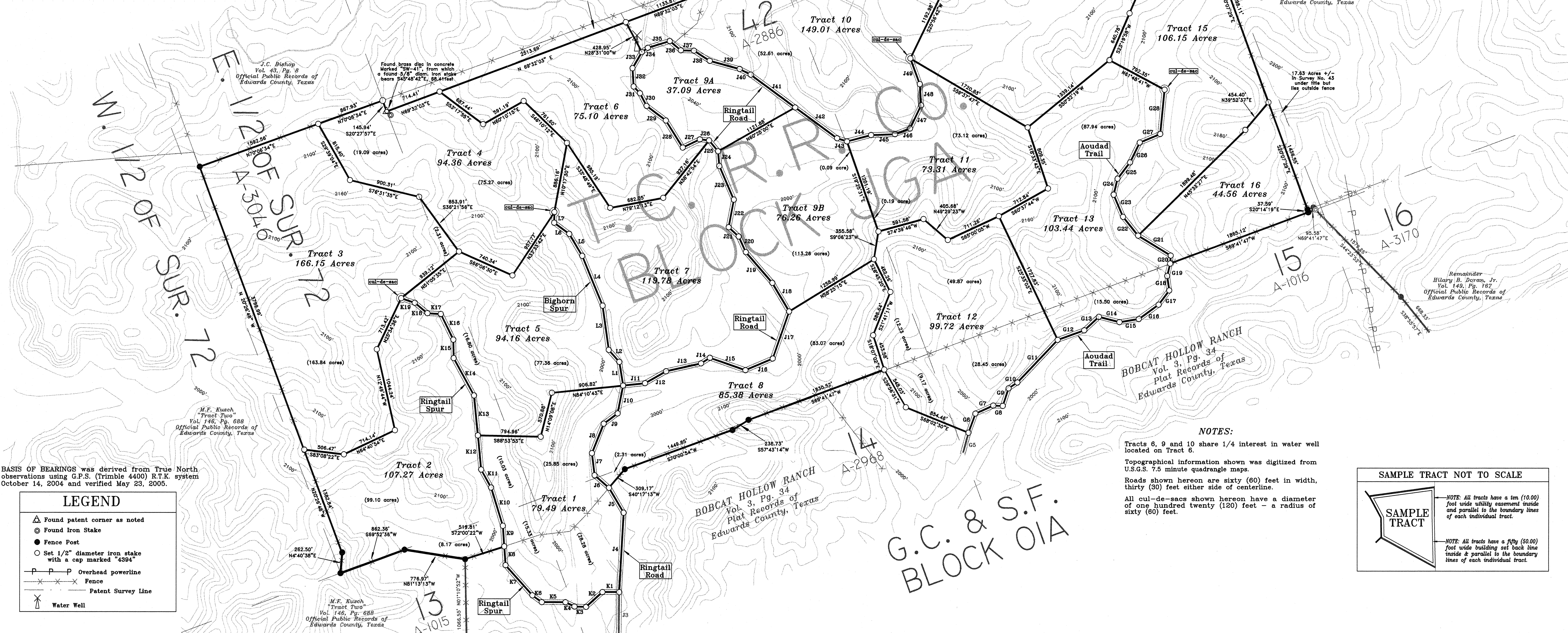


# FINAL Plat of Bobcat Hollow Ranch, Phase Two

(NOTE: Approximate patent acreages are shown in parenthesis.)

Aoudad Trail		Ringtail Road		Ringtail Spur		Bighorn Spur			
G6	N19°57'51"E 256.48'	J4	N3°06'50"E 1001.18'	J27	S64°26'18"W 240.73'	K1	S89°54'48"W 212.12'	L1	N9°14'10"W 302.70'
G7	N65°57'56"E 247.78'	J5	N30°39'01"W 363.77'	J28	N31°59'17"W 402.85'	K2	S48°00'00"W 277.48'	L2	N41°55'00"W 201.24'
G8	S87°50'28"E 119.75'	J6	N48°51'27"W 241.78'	J29	N53°02'26"W 306.25'	K3	N88°33'08"W 146.92'	L3	N7°58'24"W 562.79'
G9	N18°15'49"E 232.99'	J7	N6°54'08"W 280.08'	J30	N27°38'42"W 179.39'	K4	N64°31'36"W 127.30'	L4	N22°21'42"W 679.59'
G10	N56°30'56"E 133.50'	J8	N21°42'34"E 400.98'	J31	N43°23'31"W 116.92'	K5	S89°59'15"W 300.12'	L5	N30°48'25"W 321.56'
G11	N43°28'11"E 739.60'	J9	N53°41'30"E 217.75'	J32	N3°45'04"W 231.70'	K6	N54°06'33"W 146.01'	L6	N53°51'01"W 237.45'
G12	N70°26'02"E 356.98'	J10	N11°08'28"E 357.13'	J33	N30°21'18"E 235.46'	K7	N41°50'32"W 508.70'	L7	N1°15'52"E 134.20'
G13	N47°06'27"E 250.61'	J11	N83°45'40"E 279.60'	J34	N54°19'45"E 92.51'	K8	N4°11'26"W 236.74'		
G14	S75°33'06"E 269.63'	J12	N60°17'51"E 304.78'	J35	N72°51'16"E 289.51'	K9	N3°55'26"W 261.34'		
G15	N80°50'13"E 248.12'	J13	N77°25'40"E 453.98'	J36	S50°23'00"E 182.52'	K10	N17°17'33"W 503.14'		
G16	N54°16'57"E 309.51'	J14	N57°39'24"E 132.14'	J37	S88°16'23"E 165.77'	K11	N29°08'56"W 259.97'		
G17	N36°30'54"E 224.03'	J15	S70°58'12"E 476.05'	J38	S57°35'22"E 237.97'	K12	N5°28'28"W 432.32'		
G18	N8°08'44"W 184.67'	J16	N67°00'57"E 374.88'	J39	S74°46'08"E 392.60'	K13	N5°36'17"W 505.33'		
G19	N13°24'38"E 161.06'	J17	N19°12'47"E 627.58'	J40	S63°06'22"E 156.98'	K14	N28°52'09"W 536.80'		
G20	N4°00'51"E 100.85'	J18	N30°25'34"W 418.39'	J41	S53°47'54"E 698.23'	K15	N0°58'12"W 232.78'		
G21	N58°35'13"W 483.43'	J19	N40°57'50"W 513.77'	J42	S53°47'54"E 658.13'	K16	N26°14'48"W 359.87'		
G22	N39°03'01"W 303.87'	J20	N24°42'55"W 217.31'	J43	S72°09'25"E 130.83'	K17	N86°39'23"W 170.45'		
G23	N23°01'35"W 303.26'	J21	N47°41'26"W 172.21'	J44	N75°13'59"E 316.33'	K18	N50°46'03"W 206.14'		
G24	N13°40'12"E 206.55'	J22	N10°40'04"E 353.85'	J45	N87°54'14"E 303.08'	K19	N71°25'36"W 181.82'		
G25	N37°49'01"E 259.51'	J23	N23°39'48"W 460.61'	J46	N69°15'57"E 203.22'				
G26	N26°03'34"E 278.51'	J24	N4°47'19"W 187.13'	J47	N25°34'52"E 324.67'				
G27	N67°22'41"E 280.64'	J25	N39°49'54"W 177.73'	J48	N3°43'53"W 267.44'				
G28	N5°37'38"E 561.17'	J26	N83°28'35"W 117.50'	J49	N20°15'15"W 345.62'				



BASIS OF BEARINGS was derived from True North observations using G.P.S. (Trimble 4400) R.T.K. system October 14, 2004 and verified May 23, 2005.

**LEGEND**

- Found patent corner as noted
- Found Iron Stake
- Fence Post
- Set 1/2" diameter iron stake with a cap marked "4994"
- Overhead powerline
- Fence
- Patent Survey Line
- Water Well

**NOTES:**

Tracts 6, 9 and 10 share 1/4 interest in water well located on Tract 6.

Topographical information shown was digitized from U.S.G.S. 7.5 minute quadrangle maps.

Roads shown hereon are sixty (60) feet in width, thirty (30) feet either side of centerline.

All cul-de-sacs shown hereon have a diameter of one hundred twenty (120) feet - a radius of sixty (60) feet.

